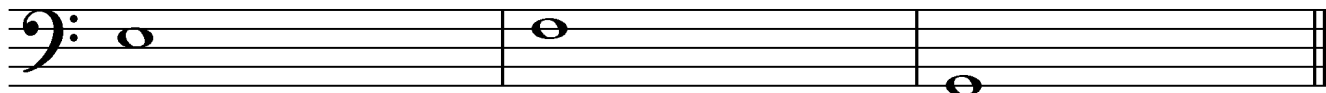


Draw Perfect 5ths ABOVE the given notes.



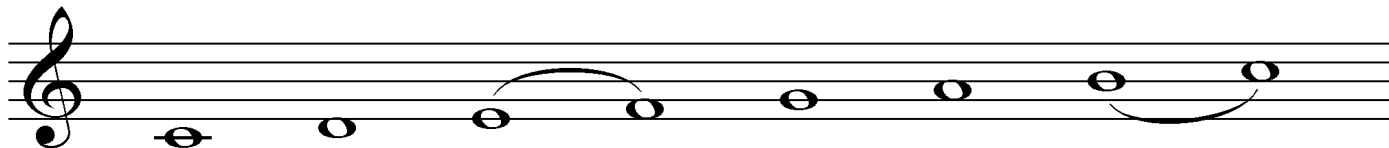
Lesson 14

All Major scales are built with whole and half steps. The Major scale pattern for those steps is:

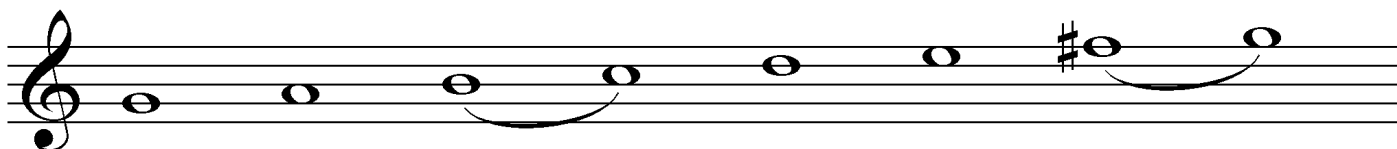
WHOLE – WHOLE – half – WHOLE – WHOLE – WHOLE - half

A slur (curved line) is placed between the two notes that are half steps. You can begin on any note on the piano, using this formula and play a Major scale. Look at the 3 examples below.

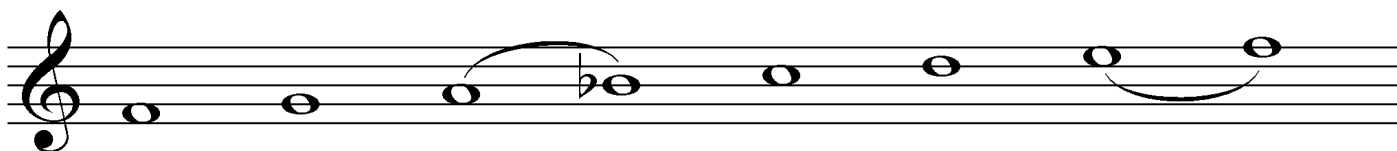
C Major



G Major



F Major



On the following page, write the Major scale pattern for each of these scales.

Put a “**W**” between the letters that are whole steps.

Put an “**H**” between the letters that are half steps.